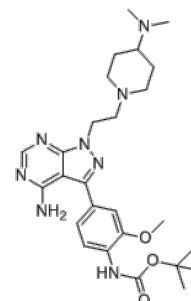


Product Name : eCF506
Cat. No. : PC-61141
CAS No. : 1914078-41-3
Molecular Formula : C₂₆H₃₈N₈O₃
Molecular Weight : 510.643
Target : Src
Solubility : 10 mM in DMSO



Biological Activity

eCF506 (NXP900) is a highly potent, selective, orally available **Src family kinase** inhibitor with IC₅₀ of <0.5 nM, <0.5 nM and for Src, Yes and Fyn kinases respectively, >950-fold selectivity for Src over ABL.

eCF506 displays no significant activity against Kit, mTOR, PDGFR α and RET (IC₅₀>10 μ M).

eCF506 suppresses SRC-associated neuromast migration in zebrafish embryos without inducing life-threatening heart defects, and inhibits SRC phosphorylation in tumor xenografts in mice.

References

Fraser C, et al. *J Med Chem*. 2016 May 26;59(10):4697-710.

Caution: Product has not been fully validated for medical applications. Lab Use Only!

E-mail: tech@probechem.com